

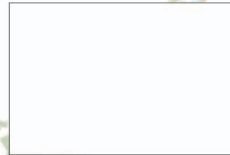
If we could design London we would...

make it bespoke:

Documentary as design tool



London is a forest



★ Value everything that's already there

Designing London means designing into London. Much of it is already there. We would closely document the places we were involved in, and suspend judgement to understand and nurture existing, sometimes surprising qualities that need revealing through the adjustment of uses and spaces.

★ Create polyvisions

London is extensive, complex, wild and amazing. Whilst it is rich in history and documented like no other city, much of it has yet to be adequately described or understood, in terms of towns, spaces, and road infrastructure.

London is always growing and strategic, special visions are needed to guide change. Dense development would benefit from extensive openness and even emptiness. We would build valleys, chases, forests, hills and plains within the city. We would make cities into parks and parks into cities. Polyvisions are a way to stimulate simultaneously varied situations across the city so that change can sparkle as a constellation.

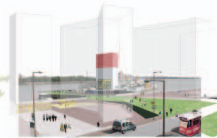
Reshaping edges for new use



★ Reshape London's edges into places

London has many edges; whether located at the intersections between UDP's where borough policies are not dovetailed, cast between development sites, or located around London as the Green Belt. We would review these areas as new areas of focus with new emphasis and status. To do this we would reuse the Green Belt, make a 'United Development Plan' to supplement the Unitary Development Plans and design masterplans between the masterplans.

Vitality through proximity and difference



★ Make London open through its mix

We would make it possible to mix uses, not only by designing excellent groups of buildings, but by bringing clusters of skills and influence together for those important, and sometimes unspectacular parts of London that most need improvement. We would include a wider range of uses than is often considered as part of an urban grouping, including industrial buildings, schools and housing, for richer communities and spaces. We would make sure that small and large, existing and new, undervalued and profitable, ugly and beautiful are all brought together.

Designing space not filling space with design



★ Make the realm public

The public realm in London is a network, or project, yet to be defined. Its range and scope is enormous and extensive, covering walking routes, roads, streets, parks, forecourts and squares. There is no single drawing of the public realm. We would design a realm that can accommodate pedestrians and cars, offer choice and purpose to people of all ages, be welcoming and safe, and be a place to spend time in. It would not just be about the outside, but everywhere that is public. We would enable it to be continuous, designed as carefully as any public monument; a way to traverse London in all its difference.

Twinning Boroughs



★ Hold picnics in the green belt

We have 100 ideas of what to do in the Green Belt, and they can all happen together. These include twinning London Boroughs with others allowing both places to benefit from each others assets, extending the underground network to reach into the green belt (Zone 7 on the tube map), making Green Belt branded products such as crisps made from potatoes in the Green Belt, or milk chocolate from cows there, and making parts of the Green Belt into a national park.

Children as clients



★ Tailor projects to people

We are excellent designers, but we don't like to design alone; we need others to help us make the right decisions. We would design all projects with their intended communities to make sure buildings, spaces, uses, and play are all as good as they could be. We do this when we work directly with schoolchildren to help us design their schools, and when we need to share experience, and target priorities. When schoolchildren are the client, the client is never wrong.