



*The Prince's Foundation*  
FOR THE BUILT ENVIRONMENT

# Annual Review



## CLARENCE HOUSE

When my Foundation for the Built Environment mounted a retrospective exhibition in April 2008, illustrating past and current projects, it was interesting to reflect on the extent of the influence it has achieved through built projects, planning tools, research and advocacy over the last ten years. I was also happy to see the Foundation's efforts placed within the context of all my efforts in this field over the past twenty-five years, for this has been a long struggle. It is, indeed, hugely encouraging to see projects on the ground together with the work of former students and employees of my old Institute of Architecture and my Foundation, being built throughout the country and around the world.

While I am so heartened and impressed to read of my Foundation's achievements, I still feel immense frustration at the slow pace of change in the face of the increasingly urgent need for more sensitive and responsive human environments. The task is made all the harder by the short-term thinking that still predominates in so many spheres of life; a perspective which threatens at a fundamental level our ability to avert catastrophic climate change. The plight of the planet, and of entire threatened communities, is something that informs the work of all my charities. Expressed in terms of the built environment, within the UK the emphasis of my Foundation remains on maintaining the drive towards dense, mixed-use, walkable development in preference to suburban sprawl, as well as the evolution of residential design to show that "eco homes" can be as attractive and courteous to their surroundings as the most desirable traditional dwellings. Elsewhere, efforts are focused on helping the developing world learn from our own lamentable errors; in China, this means not losing the best of a cherished vernacular past in a mad rush for modernity, whilst in India and Jamaica it means enabling local communities, some of them amongst the most vulnerable on Earth, to achieve basic security and sanitation without losing a measure of local identity and the sense of place that comes with self-governance.

I am pleased to see the Foundation pushing forward on all fronts and I will be encouraging both the UK and International campaigns in the forthcoming year.

A handwritten signature in black ink, appearing to read 'Charles Jencks', with a long horizontal flourish underneath.

# An Introduction to The Prince's Foundation for the Built Environment



## **An interview with Hank Dittmar, Chief Executive Officer, by Genevieve Muinzer**

Since his appointment as CEO in January 2005, Hank Dittmar has brought The Prince's Foundation forward strategically to create an organisation that not only delivers exemplar projects but also seeks to train and educate all who are associated with its work. A leader in the world of urban planning and transport design, Dittmar has risen to the challenge of making the organisation a significant force to be reckoned with in the field.

'Being asked to carry forward the vision of HRH The Prince of Wales is a great honour and privilege,' he observes. 'No world leader has the breadth of vision or long-term policies that he possesses. His vision is holistic: he is fully able to see the global picture and yet at the same time has a very strong sense of place and local identity.'

The year has witnessed another phase in the steady evolution of The Prince's Foundation under Dittmar's stewardship. 'There are three overriding themes to our work in 2008—9, all focused on responding to the triple convergence of the recession, climate change and global urbanisation with long-term thinking. HRH has pointed out that short-termism is at the root of all of our problems, and we have tried to demonstrate the importance of an inter-generational approach to sustainable development.

The first strand is project implementation. After years of focus on urban planning and masterplanning we are actually seeing the fruits of our hard work in the first phase of Coed Darcy and the planning approval for Newquay, to name only two of our projects.

'The architectural component of our work has also grown. We are no longer just looking at the design of towns, but also in the design of individual buildings. Faced with the challenge of constructing low carbon home we have responded with 'The Natural House' which demonstrates that a green building can be natural, affordable, practical, traditional and beautiful.'

'The third change this year has been the return of students to the life of The Prince's Foundation. Students emerging from the second year programme of our Building Crafts Apprentice Programme and Residential Summer School have the strong stamp of HRH The Prince of Wales's philosophy. Similarly, our new Graduate Fellows have also absorbed the message and have enhanced the energy level of the organisation.'

Despite the disruptions that the current recession has affected on every business and charity in 2009, The Prince's Foundation has received backing from its core supporters and has managed to sustain momentum.



‘What has been so gratifying is that our core donors have continued to back us,’ Dittmar notes. ‘Staff have also come through for The Prince’s Foundation. They support our work and want to affect change.’

At the heart of The Prince’s Foundation’s business model is the need to educate, train and spread the word of sustainability. This has been accomplished through the burgeoning number of exemplar projects that can be studied by developers. The training programmes also educate planners on place-making, while the courses for craft workers clearly impress on them how valuable their skills are to society. But an important means of engendering sustainability is through working closely with the growing number of Enrolled Members and Practices.

‘They are vital in implementing our design policies,’ Dittmar explains. ‘We can’t possibly work on every project but if we undertake the scoping phase, we can recommend a Member to complete the job, which is also beneficial for them. Our network will sustain our standards, and we can increase the market share for sustainable cities and towns.’

As The Prince’s Foundation’s urban planning and design projects are successfully delivered throughout the world, so its reputation has steadily grown in stature.

‘We are now being asked to handle projects all over the globe,’ says Dittmar. ‘Developers have begun to recognise that we understand sustainable design and know how to achieve the best results.’

What is it like to be CEO of this unique organisation? Dittmar laughs. ‘It’s like drinking from a fire hose! It runs me, I don’t run it! You have to be careful not to look too far ahead as it’s overwhelming so you must plan strategically. In the past, my different jobs have either involved design, public policy, politics or running an organisation. However, this is the first time that all these factors have merged together and I now use these skills daily. It sounds complicated, but working for The Prince’s Foundation is a fantastic job.’

*‘What has been so gratifying is that our core donors have continued to back us.... Staff have also come through for The Prince’s Foundation. They support our work and want to affect change.’*



*From Top: Site scoping visit by Foundation colleagues in London; Scheme for new urban quarter at Jazan, Saudi Arabia, image: Joanne Ullathorne.*



# People & Skills

Integral to The Prince's Foundation's mission is a robust educational, research and design ideology that seeks to enlighten and inform communities about traditional and sustainable building with clear social and ecological messages. There is an urgent need globally for suitably skilled craftspeople, architects and urban planners and the programmes outlined here represent The Foundation's attempts to redress the severe inadequacies that currently exist in the field.

This year, 10 Building Craft Apprentices enrolled in the eight-month-long **Prince of Wales's Building Crafts Apprentices' Programme**, beginning with the Summer School that was held in London, Lincoln and Poundbury. The three-week summer school was called 'The Culture of Building' and through lectures and workshops [pictured], students gained knowledge of traditional building and conservation techniques. The apprentices continued their programme by working for specialists in their chosen fields, gaining valuable one-on-one tuition as they applied their training on a variety of unique buildings including Windsor Castle, and Fountains Abbey. They also built a beautiful shelter for young people in the park at Poundbury.



Carpenter Kieran Wint, the 2009 Craft Apprentice Hancock Medal Winner [pictured], observes: 'When I heard about the course I felt that this would be an unmissable opportunity to work on high-quality projects, and learn from master craftsmen. I have learned so much, which has allowed me to accomplish work that I could only have dreamt of doing.'



Similarly, **The Prince of Wales's Graduate Fellowship Programme** has provided students with valuable design training. In 2008, eight Fellows from six countries, with backgrounds in urban planning and architecture, have been enrolled on the two-year course working within one of three multidisciplinary teams. Fellows participated in research projects, assisted on major conferences and events and produced reports and design studies. During their second year they will be placed in the practices of Foundation Members.

Fellow Bethania Soriano reports: 'I consider the Graduate Fellowship a unique opportunity for young professionals interested in the built environment, to learn about place-making based on the traditional and timeless principles that The Prince's Foundation reinforces. I feel that with this support we can develop our design skills to meet the current challenges presented by climate change and rapid urbanisation.'

**Executive Education** is served through the Poundbury Series, initiated in 2007. Poundbury, the urban extension to Dorchester in Dorset, is internationally recognised as exemplifying one of the most advanced

Above: Kieran Wint carving stone at Lincoln Cathedral; Kieran Wint accepting the Hancock Medal for outstanding Apprentice alongside HRH and Ian Marton of Hancocks



*‘The Prince’s Foundation’s training programme also teaches invaluable life skills. These life skills allow the apprentices to build a long-term career in a sustainable business environment. Not only is the individual richer for these skills but society is too.’*

Michael Hintze, The Prince’s Foundation Trustee

solutions to urban settlement; it is cited by the UK government as a model for new development and the enhancement of rural economies. This year, seven tours and events have focused on the multifaceted aspects of sustainable building, urban design and transport systems that Poundbury represents.

Poundbury was also the setting for a competition for the design and construction of a youth shelter by the Craft Apprentices and Graduate Fellows *[pictured below]*. They designed and built a pentagonal structure made of cedar and oak with a Portland stone base and an imaginative mosaic floor that has caught the attention of the local community.

The dual goals of ecological responsibility and enhanced economic value are pivotal to The Foundation’s work and have been reflected in all projects. A conference, entitled **A Changing Climate: The Business of Smart Growth**, was held at Kensington Palace in November and engaged leading experts from the fields of climate change, finance and the built environment. The symposium identified ways in which property portfolios and business strategies could be future-proofed in the face of uncertain global financial markets. It was concluded that valuable lessons for the built environment could be learned from the current economic collapse, where short-term profits have led to long-term disintegration.

*Top: Drawing of Youth Shelter, Poundbury; Below: Youth Shelter detail, Poundbury*



The message of sustainability through traditional building has been given special emphasis this year through the publication of three unique Prince's Foundation books by our Senior Fellows. Leon Krier's *The Architectural Tuning of Settlements*, Ray Gindroz's *The Place of Dwelling* and David Cadman's *The Roots of Sustainability* can be purchased through The Prince's Foundation.

One of The Prince's Foundation's most innovative architectural projects, has been **The Natural House**. The build was visited by HRH The Prince of Wales in May and, when completed, the scheme will feature a pair of semi-detached dwellings, one a conventional three-bedroom house, the other representing flats. Uniquely in the UK, lightweight aerated clay blocks have been used, fired in a low energy manufacturing process, that interlock to form a well-insulated wall construction [pictured]. Further insulation is provided by lime based renders, sheeps-wool and wood fibre board, all natural, healthy and highly effective methods of temperature regulation. The Prince's Foundation feels this exemplar project will influence the design of houses throughout the world as we recognise that 60 per cent of the carbon emissions originate from our design and operation of building stock.



Top: 'Zeigel' The aerated clay block used for 'The Natural House'

Above: The Natural House

Left: Wilf Jordan of Natural Building Technologies explains the construction of the house to HRH The Prince of Wales.

Photo Peter White, BRE



# Building on the Past to Face Future Challenges: Exemplar projects

The Prince's Foundation promotes an improved quality of life through timeless and established principles of traditional design, building and planning. Such principles also offer solutions to mitigate climate change. Amongst the defining characteristics of Sustainable Urbanism are walkable neighbourhoods, mixing property uses, accessibility to local shops and amenities, connectivity to adjacent neighbourhoods, cycle-friendly roads, and coherence in design aesthetics. These criteria are at the heart of The Prince's Foundation's designs, as evidenced here in our exemplar projects.

## England

This year The Foundation has promoted many projects with innovative elements. The EbD that was held at **Romsey** in Hampshire provided an opportunity to explore the development of localised, secure and sustainable food and farming in a modern urban community *[pictured]*. This thinking is groundbreaking and has not been attempted at this scale before in the UK, yet it is essential in terms of pioneering food systems for the 21st century and beyond.

Similarly, Westminster Council invited The Prince's Foundation to advise on the conservation of London's **Chinatown**, in and around Gerard Street, to create more authentically Chinese elements. Last autumn, an EbD led by The Foundation with key stakeholders developed a design strategy for the area. The report's recommendations will preserve this vibrant and thriving part of London as an important example of how cultural diversity can enrich the architectural profile of London.

Outreach to small communities was also addressed in a scoping exercise that sought to expand the village of **Dunster**, a small medieval town that co-exists with a 1970s housing estate on its periphery. The Foundation continued to work in **Burnley**, East Lancs, as part of a multi-pronged effort at regeneration involving many of The Prince's Charities working together.



*'As over 60 per cent of our carbon emissions can be attributed to the built environment, all of us who are involved with the making of place have a great responsibility.'*

HRH The Prince of Wales  
in his 2009 speech to RIBA



*Above: Image of Chinatown, London during the EbD lead by the Princes Foundation in 2008. Left: Illustration showing the new urban edge condition with water mitigation for the Romsey—Whitenap EbD in Hampshire. Far left: Illustration of a 'canaletto' from the Romsey—Whitenap site EbD in Hampshire. The 'canaletto' drainage ditch is modelled after similar historic systems and part of a complete water retention / mitigation integrated in the masterplan. Image, James Hart-Dyke.*



*Above: Swansea University Coastal Masterplan*

*Below: The 'eco-hamlet' being developed for BP as an exemplar of best practice. Design by Ben Pentreath/Working Group Ltd.*

## Wales

The Design Team's largest project has been the masterplan and outline planning application for a new campus for 5,000 students at **Swansea University** [pictured]. This has been developed with Porphyrios Associates and in partnership with the site owners British Petroleum (BP), NSATA Port Talbot Council and the Welsh Assembly.

Another substantial exemplar project is **Coed Darcy**, also run in partnership with BP, Neath Port Talbot Council and St Modwens. Phase One, designed by Robert Adam Architects for Atlantic Properties/ St. Modwens and involving the construction of 60 homes, is approaching completion. The site will ultimately accommodate 4,000 homes along with substantial employment around a town centre. A small eco-hamlet is being designed there demonstrating low energy housing approaches, setting the standard for the development to follow [pictured].

In contrast to these larger works, the **Cambrian Mountains** project involves the revitalisation of a series of small settlements in a remote mountain area. A series of workshops and a masterplan will show how affordable homes and local amenities can be developed to boost its economy and save this rural area, and by example others, from future decline.



*‘The notion that cities are composed, like ecosystems, of basic types, which change slowly, but are flexible and adaptable, is being applied in The Foundation’s work in town planning for historic town centres.’*

Hank Dittmar, CEO The Prince’s Foundation



### Scotland

The Prince’s Foundation’s work in Scotland has accelerated with sustainable urban extension projects at **Cove Bay** (Aberdeen), **Banchory** (Deeside), **Nairn** (Moray Firth) and **East Ayrshire**, in addition to an expanded education programme. Scotia Homes Ltd has remained an important sponsor of our projects and has also worked with us in collaboration with the Stewart Milne Group at Cove Bay and Robertson Homes and Barratt Homes Scotland at Nairn.

It was a source of great pride to The Prince’s Foundation when their joint project in **Ellon** [pictured] with Urban Design Associates (for Scotia Homes) received the 2008 prize for Community Involvement at the Scottish Awards for Quality in Planning. Urban Design Associates have continued to partner The Prince’s Foundation in the design development of these projects.

After HRH The Prince of Wales lead the successful campaign to purchase Dumfries House, an unchanged Robert Adam mansion in East Ayrshire, for the Scottish nation, the Prince’s Foundation have been involved in regeneration plans for the nearby towns of **Auchinleck**, **Cumnock**, and **Mauchline**, including an urban extension to Cumnock of 700 homes [pictured]. The EbD was conducted by The Foundation along with a diverse group of Scottish architects, and its extensive efforts at consultation and at sustainability earned it recognition as part of the Scottish Sustainable Communities Initiative, in a ceremony conducted by Scottish Government Finance Minister John Swinney.



*From top: Illustration showing the proposed new high street for the project in Ellon, Scotland. Project undertaken in collaboration with UDA. Top image, UDA; Bottom image, Joanne Ullathorne*

# International Initiatives

The Prince's Foundation sees its work as having a global application in a radically altering world. Climate change and a booming population growth will create enormous challenges for countries worldwide. By 2030, the world's population is expected to grow by 2.2 billion. Sixty per cent of the world's people will live in urban areas, migrating from rural areas in a movement that will transform towns into cities across the developing world. The Prince's Foundation is keen to share its growing expertise in sustainable urban development in the creation of new communities and the reconstruction of damaged ones.



The Prince of Wales's visited **Rose Town** in Jamaica in 2000, and since that time, The Prince's Foundation has collaborated with local partners in the revitalisation of this dispossessed area, making it an important exemplar project. In November 2008, The Prince's Foundation conducted an architectural charrette that supported the design of new affordable housing in vernacular styles that would reflect the community's wishes and its indigenous culture. A **Craft Training programme** was simultaneously established demonstrating that it is possible to regenerate the community economically and, in the process, create skilled employment opportunities for local people *[pictured]*. In 2008, The Prince's Foundation worked with builders in Rose Town to renovate a church for use as a library and community centre. A small park was also created and public art installed. There is now a greater sense of community, manifest in the cleanliness of the town, the litter-free streets and an absence of vandalism.

*We note with great sadness that Michael Black of the Rose Town Benevolent Society died on 26<sup>th</sup> June, 2009. Michael made an enormous contribution to The Prince's Foundation's work in Rose Town and, in particular, ensured this project was accepted by and embedded in the community.*

This year will see the establishment of **The Rose Town Foundation for the Built Environment**, a Jamaican not-for-profit charity that will facilitate the continued regeneration of Rose Town. It will work closely with The Prince's Foundation, focusing on fundraising, project management and the promotion of the regeneration of the community and the development of affordable housing.

In 2008 we were invited to participate in a workshop conducted in partnership with Tsinghua University, China. The Prince's Foundation published the findings from this report in **Dashilan, Beijing: Living Tradition of Sustainable Communities** *[pictured]*.

*Above: The Prince's Foundation's Jamaican crafts apprentices tutors after their graduation  
Left: Design proposals for Dashilan, Beijing, image: Bill Dennis*



*‘The Prince’s Foundation could not be more successful in executing its vision of an integrated community approach to town planning. Year on year we have seen a growth in its outreach and the take up of its ideas. It is exceptionally important and successful — and that is why I continue to give it all my support.’*

Michael Hintze, Trustee

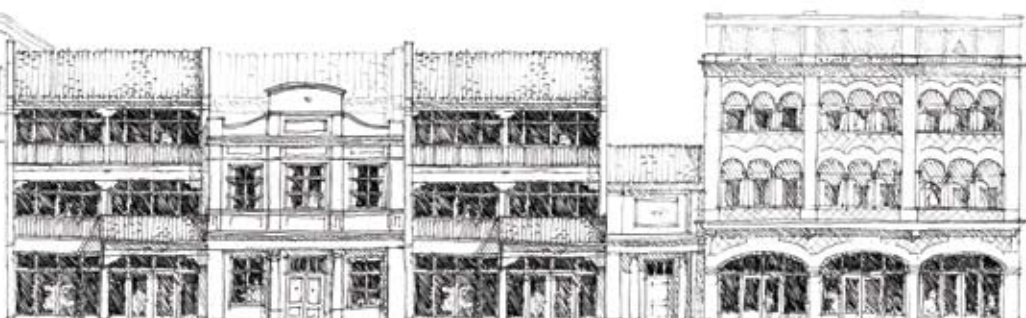


*‘Well-made places are fundamental to the ability to establish locally-inspired solutions to local issues and, indeed, local solutions to global ones.’*

HRH The Prince of Wales,  
Address to the 2009 Annual  
Conference on Globalisation

Recommendations were made for the regeneration of one of Beijing’s old Hutong neighbourhoods. This project has provided a platform for The Prince’s Foundation and The Prince’s Charities Foundation (China), to develop strong relationships with the Beijing Municipal Government, and other influential Chinese organisations. It has laid the groundwork for an exciting suite of projects for The Prince’s Foundation and for China.

HRH The Prince of Wales addressed The Prince’s Foundation’s annual conference, **Globalisation From The Bottom Up**, at St. James’s Palace, in February. The conference, featuring Jockin Arputham, founder of the Slum Dweller’s Federation in Dharavi, Mumbai, India, focused on the fundamental importance of local identity, culture and design in place-making throughout the world. The speakers demonstrated how community empowerment can result in a new type of globalisation. Because places are rooted in their own local climate, ecology and culture, they are able to respond more effectively to issues associated with climate change, food security and migration to cities.



*Above: Infants’ school, Kabul, established by the Turquoise Mountain Foundation, one of The Prince’s Charities, which participated in the Annual Conference. Image, Z. Majidi / Turquoise Mountain Foundation*

# Development & Fundraising

*If you are interested in supporting the vital work of The Prince's Foundation or finding out more ways in which we could work together, please contact Tadas Khazanavicius in our Development Department.*

**E** [Tadas@princes-foundation.org](mailto:Tadas@princes-foundation.org)

**T** +44 (0) 20 7613 8517

The Prince's Foundation for the Built Environment's income from Project and Practice work covers only a portion of the annual expenditure associated with the range of The Foundation's charitable activities. In 2008–2009, the Development team raised £2.5m, representing just over half of the charity's overall income.

The continued growth in the demands on The Prince's Foundation has led to a need to find new donors, supporters and partners to help us to deliver new programmes as well as building on the success of existing ones.

We are particularly grateful to our long term donors, many of whom have increased their support in recognition of our growing sphere of activity. Without their generosity, The Prince's Foundation would not be able to exist, and we are immensely thankful for their continued loyalty:

Joseph C Canizaro, Columbus Properties LP, The The Hintze Family Charitable Foundation, The Eva and Hans K Rausing Trust, The Gosling Foundation, Ellerman Investments, Porcelanosa Charitable Foundation, and The Rachel Charitable Trust.

The encouragement and financial support received this year has been vitally important to The Prince's Foundation and we would like to express our gratitude to the many people and organisations that have helped us:

Apprenticeship Training Ltd (ATL)  
The Bank of America Charitable  
Foundation  
B&CE Charitable Trust  
Mr Francesco and Mrs Gael Boglione  
BP  
Mr and Mrs Richard Briance  
Joseph C Canizaro, Columbus  
Properties LP  
The Cayo Foundation  
The John S Cohen Foundation  
Construction Skills Certification  
Scheme (cscs)  
Duke of Cornwall's Benevolent Fund  
Ellerman Investments  
Freshfields Bruckhaus Deringer  
The Gosling Foundation  
The Hintze Family Charitable  
Foundation

The Hobson Charity Limited  
International Holdings  
jsw Foundation  
Kuwait Finance House — Bahrain  
Mr Kenneth and Mrs Melissa Leet  
Louisiana Carpenters Regional Council  
Apprenticeship & Training Fund  
The National Trust  
Tish Nugee  
David C Ord  
Michael Peagram  
Porcelanosa Charitable Foundation  
The Prince of Wales's Charitable  
Foundation  
The Eva and Hans K Rausing Trust  
The Rockefeller Foundation  
Xavier Rolet  
Tim and Damaris Sanderson  
St. Modwen Properties PLC



*Illustration of one of the unit types designed during the 2008 Rosetown Architecture Charette lead by the Princes Foundation in Rosetown, Jamaica. Image, Samantha Singer.*

Symm & Company Limited  
 Daniel K Thorne Foundation, Inc.  
 Tulane University  
 The University of Miami School  
 of Architecture  
 Mr and Mrs Tom Wiggin  
 The Westminster Foundation  
 The Worshipful Company of Carpenters  
 The Worshipful Company of Tylers and  
 Bricklayers  
 Co-Chairs for the Rose Town  
 Project, Ambassador Brenda Johnson,  
 Ambassador Mary Ourisman and  
 Michele Rollins, who have successfully  
 established a group of donors to  
 support Rose Town's regeneration.

**In kind donations:**

CEVA Logistics  
 C.G. Fry & Son  
 Church Lime Conservation  
 CQS  
 Kevin Crabbe  
 D&P Lovell Quarries Ltd  
 Elliot Hire  
 Ford Civil Engineering  
 G. Crook & Sons  
 Giffords  
 Ray Gindroz  
 Google  
 Ian Cox Roofing Ltd

Peter James  
 Mitchell Hire & Sales  
 Morrish Builders  
 National Building Museum  
 Preservation Resource Center  
 Purlieu Property Services  
 Rawnsley Woodland Products  
 Rose of Jericho  
 Henry Rumbold  
 Russell Scaffolding Ltd.  
 Spring Grove Forge Ltd.  
 Stone Firms Ltd.  
 V. Wallis Welding Ltd.  
 Christine Walsh  
 Whitney Sawmills

*And others who wish to remain  
 anonymous.*



**The Prince's Foundation  
for the Built Environment**

19–22 Charlotte Road  
London EC2A 3SG  
United Kingdom

**E** [enquiry@princes-foundation.org](mailto:enquiry@princes-foundation.org)

**T** +44 (0) 20 7613 8500

[www.princes-foundation.org](http://www.princes-foundation.org)

The Prince's Foundation.

President: HRH The Prince of Wales. Registered Charity No. 1069969.

A Company Limited by Guarantee No. 3579567.

Registered in England at the listed address. VAT No. 839 8984 44.

The Prince's Foundation for the Built Environment is an educational charity which exists to improve the quality of people's lives by teaching and practising timeless and ecological ways of planning, designing and building.

Over the next five years, The Prince's Foundation has set an ambitious and hopefully compelling set of goals:

- ◆ We will work with a growing global network of traditional urbanists, architects and developers to capture a significant market share of new development and regeneration for sustainable urbanism by attracting and defining projects, referring them to trusted partners, and overseeing build out and quality over time.
- ◆ We will train and place professionals and craftsmen who can take forward this new agenda, through a comprehensive educational offering, delivered by The Foundation and a network of educational partners.
- ◆ Through research, development and practice, we will define and promote new tools and methodologies for sustainable urbanism, architecture and building, creating a new economic model for local and ecological building in response to the global crisis.